

## KJI ENGINEERED GOUGED SHAPED & PROFILED BASSOON CANE SPECIFICATIONS 117 MM LENGTH

MODEL	COLLAR*	MID BLADE*	FOLD*	FINISHED REED TIP 55 MM**	COLLAR 27 MM**	2 <sup>ND</sup> WIRE 18 MM**	END OF REED 0MM**	STYLE
KJI117GSPKJI	.90	.68	.44	15.2	9.4	9.0	9.2	CONCAVE
KJI117GSPJM1	.91	.65	.43	15.4	9.2	8.7	8.6	CONCAVE
KJI117GSPJM2	.98	.66	.45	14.7	9.1	8.7	9.2	CONCAVE
KJI117GSPR1	.92	.68	.43	14.8	8.9	8.9	9.7	CONCAVE
KJI117GSPR1A	.93	.67	.43	15.4	9.2	9.1	9.7	CONCAVE
KJI117GSPR2	.95	.68	.47	15.7	9.4	9.3	9.7	CONCAVE
KJI117GSPDR	.94	.67	.42	14.5	9.0	8.9	9.2	CONCAVE

## KJI ENGINEERED GOUGED AND PROFILED BASSOON CANE SPECIFICATIONS

KJI117GP	.91	.71	.41	117 PROFILE / 117 MM LENGTH				
KJI117GP120	.90	.65	.45	117 PROFILE / 120 MM LENGTH				

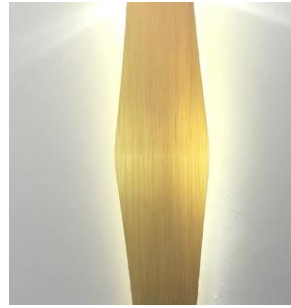
Note1: \* MEANS THICKNESS

Note2: \*\* MEANS WIDTH and

MEASUREMENTS ARE FROM SMALL END OF CANE



**KJI117GSPKJI**



**KJI117GSPM1**



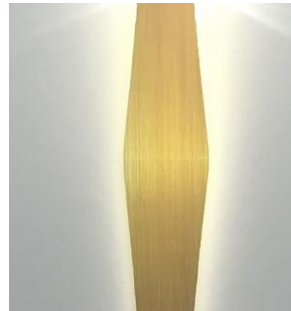
**KJI117GSPJM2**



**KJI117GSPR1**



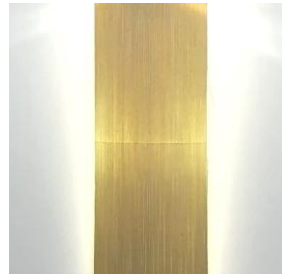
**KJI117GSPR1A**



**KJI117GSPR2**



**KJI117GSPDR**



**KJI117GP**

**KJI117GP120**