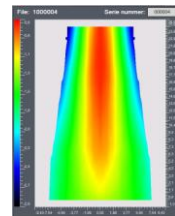


Attached you can find images of bassoon templates which we have at this moment. They give a good impression of the overall shape of the template. The tip is shown at the bottom of the images.

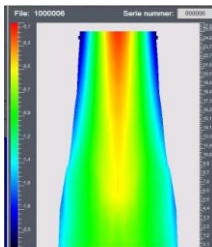
The differences in thickness between the middle and the sides at the reed tip are:

- For template CB003, 0,16mm.
- For template BA004, 0,11mm (this is the standard template).
- For template BA006, 0,11mm.
- For template BA008, 0,02mm.
- For template CB009, 0,24mm.
- For template BA013, 0,16mm.
- For template BA016, 0,13mm.
- For template BA018, 0,19mm.
- For template BA019, 0,10mm.

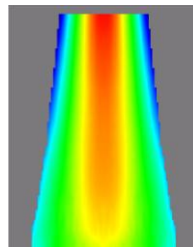


BA004

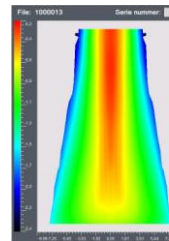
BA means bassoon and CB means contra bassoon.



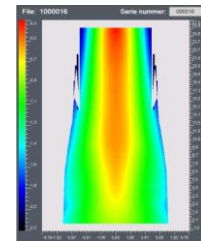
BA006



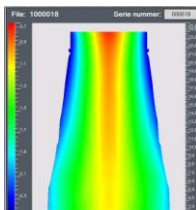
BA008



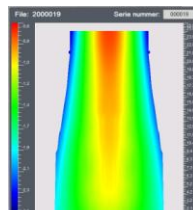
BA013



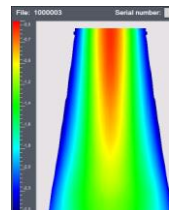
BA016



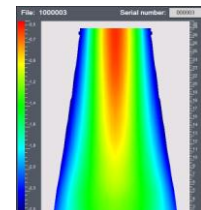
BA018



BA019



CB003



CB003